

MSDU

MIDWEST SOCIETY OF
DIAGNOSTIC ULTRASOUND



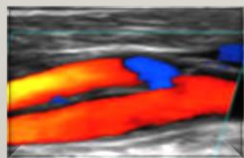
Midwest Society of Diagnostic Ultrasound

MSDU PRESIDENT UPDATES

By Jane J.K. Burns, AS, RT, RDMS

Our last Board meeting was held on 11-8-14:

November 2014



- We strived to keep the Tuition for our upcoming Spring Seminar as low as possible. We received many complaints about the processing fees associated with the Seminar Tuition. The fees are charged for our online registration and credit card processing. Unfortunately we are unable to eliminate these fees. The old time-consuming manual processing of registrants is no longer an option for us. Therefore the Board has decided to raise the Tuition to cover these fees, so a separate fee will not show during the registration process. The “Early Bird Member” registration fee for both days will be \$280 and the “Non-Member” fee for both days will be \$330. The Tuition prices will increase in February and March, so it is important to register as early as possible to receive the best Tuition rate.
- Once again, the Board has voted to provide a [reduced Membership rate of only \\$15](#) for all renewals completed by December 31st, 2014. All Membership renewals prior to this dated will automatically be entered into a drawing for “**Free Tuition**” to our 2015 Spring Seminar. We will draw one name from the Active Members list and one name from the Students list. Those Winners will be notified by email in January.
- Active Members and Students will once again be able to apply for a Spring Seminar Tuition Grant. The application process and guidelines are listed on our Website.
- The Student Poster competition will be held during the Spring Seminar and we encourage all of our schools to review the guidelines posted on our Website and participate in this learning event.
- The Board has voted to present eight lectures on Saturday in our four separate Tracks and four lectures in a combined Session on Sunday. This will allow us to optimize our Speaker’s time, help to contain Hotel costs and provide one more CME for our attendees. A few of our confirmed Speakers for the 2015 Spring Seminar are: Dr. James Shwayder, Mani Montazemi, Dr. Christine Hills, Theresa Jorgensen, Sal LaRusso, Dr. Nandu Rawool, Dr. William Fabian and Dr. Katarzyna Hryniewicz. We are very excited about the wide variety of Lectures that will be presented. We will continue to offer the [Hands-on Scan Sessions on Friday evening.](#)

MSDU

MIDWEST SOCIETY OF
DIAGNOSTIC ULTRASOUND



Midwest Society of Diagnostic Ultrasound

- The Wine and Cheese event will be held on Saturday evening at 5 pm immediately after the lecture sessions. Door Prizes will be drawn at 6 pm and you must be present to WIN!!

Renew your
membership
by 12-31-14
to receive
50% off
of the usual
fee!

Please visit our website at www.msdu.org and follow the prompts for membership renewal and upcoming instructions for registration for the Spring Seminar, which is being held at the Minneapolis Marriott Northwest (formally the Northland Inn) on April 10-12th, 2015.

Sign up early and join us for this wonderful experience!!!



*Remember to
book your hotel
reservation by
3-10-15!*

Remember!

PLEASE JOIN US

35th Annual
MSDU
Spring
Seminar

FRIDAY APRIL 10th-
SUNDAY APRIL 12th, 2015.

*At the Minneapolis Marriott
Northwest*